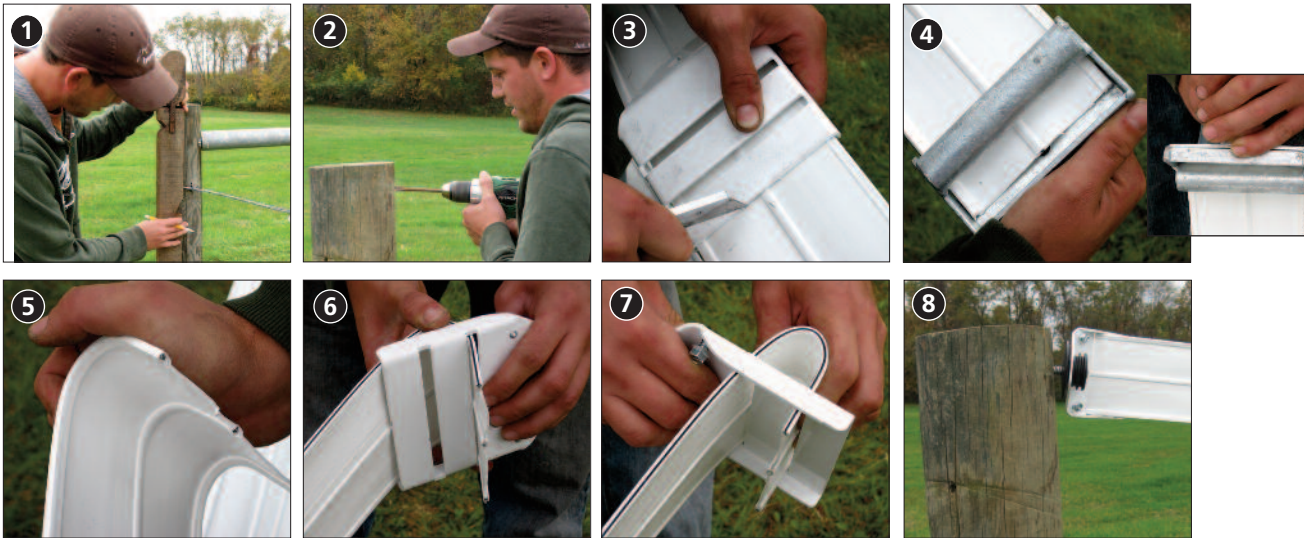


# HOTTOP® and HOTTOP® PLUS – END POST ATTACHMENT



- 1 Mark all posts. (see "How To Mark Posts" PDF)
- 2 Pre-drill all holes using a 5/16" (8mm) drill bit approx. 3" to 4" (76mm to 102mm) into the post.
- 3 Cut Rail. (see "How To Cut Rail" PDF)
- 4 Use a Bending Tool to properly size and shape the bend at the end of the rail.
- 5 Use your hand to further bend the end of the rail so that it is close to parallel with the rail.
- 6 Insert bent rail into slot closest to attaching hole.  
**Note:** Make sure the "ribs" and pre-bent angle of the Buckle are facing away from you!
- 7 Pull enough rail through the slot to let you then slide the rail end through the remaining slot in the Buckle. Then pull/push both rails down through the slots as much as possible - trying to flatten the rail/ buckle assembly.
- 8 Fasten End Buckle assembly with lag screw using an impact wrench.  
**Note:** Only tighten halfway - see diagrams on page 2 for details.

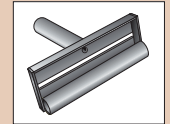


**TIP:** To find the proper length when attaching a rail to an end post:

- First place a Buckle on top of the rail.
- Pull the rail (hand tight).
- Hold the two items up to the post marking where the desired length would be.
- Mark the rail and follow the steps on how to cut it.

## Horserail® Products

- Pre-Bent 45° Attaching Buckle
- Straight Attaching Buckle
  - Colors: White, Black and Brown
  - Size: 4" (102mm)
- Bending Tool
  - Size: 4" (102mm)



## Other Tools Needed

- Square
- Utility Knife
- Bolt Cutters
- Impact Wrench
- 5/16" (8mm) Drill Bit
- Lag Screws: 1/2" x 4" thru 6" (13mm x 102mm thru 152mm)

## Other Related PDF Info Sheets

- How to Mark Posts
- How to Cut Rail

*For More Details,  
Tips & Techniques  
on Building Fences,  
Please visit our website:  
[www.horserail.com](http://www.horserail.com)*



Diagram 1

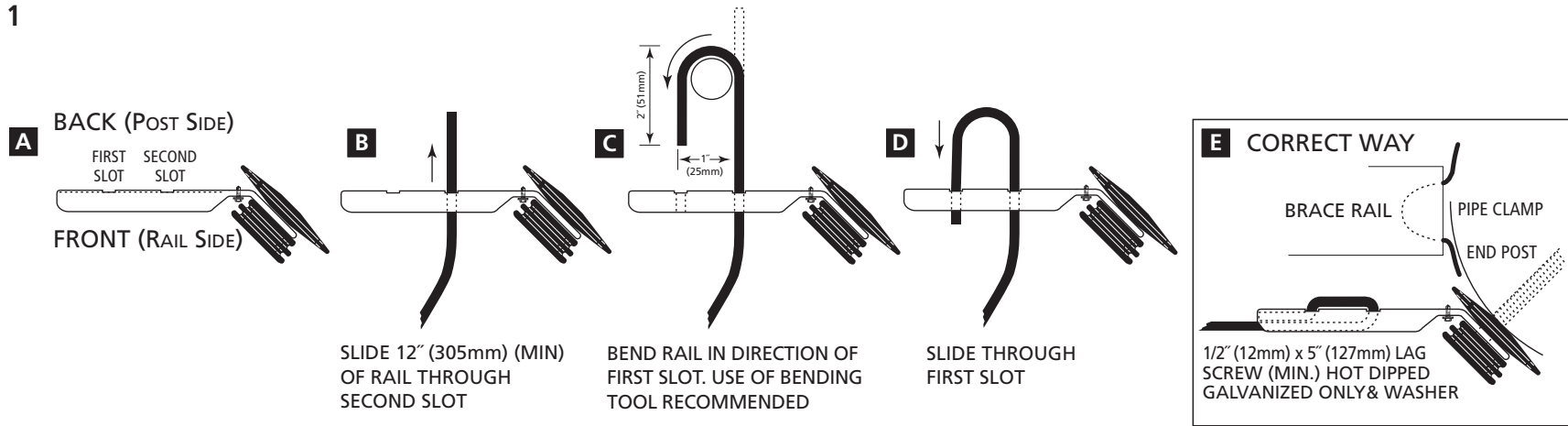
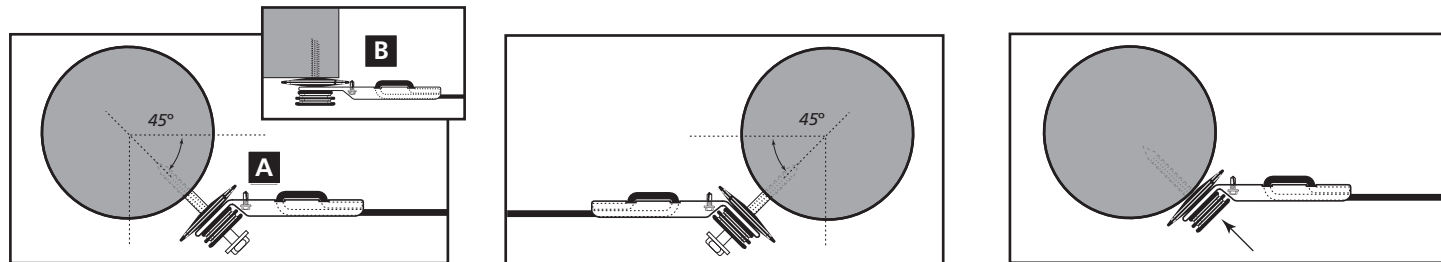


Diagram 2



Install rail onto selected end buckle and attach to end post

- A** Pre-Bent 45° Attaching Insulated Buckle – attach at a 45 degree angle leaving the lag screw partially out
- B** OPTION: Straight Attaching Buckle - for use on a flat surface such as a building - **Note:** tighten the lag screw
- C** **IMPORTANT: Do Not Overtighten!**

Install other end of rail using the proper end buckle

- Tighten lag screw halfway
- Leave sufficient length in rail to allow proper tensioning

Complete your fence installation by fully tightening both end post lag screws - this will also further tension the rail!

- **IMPORTANT: Do Not Overtighten!**