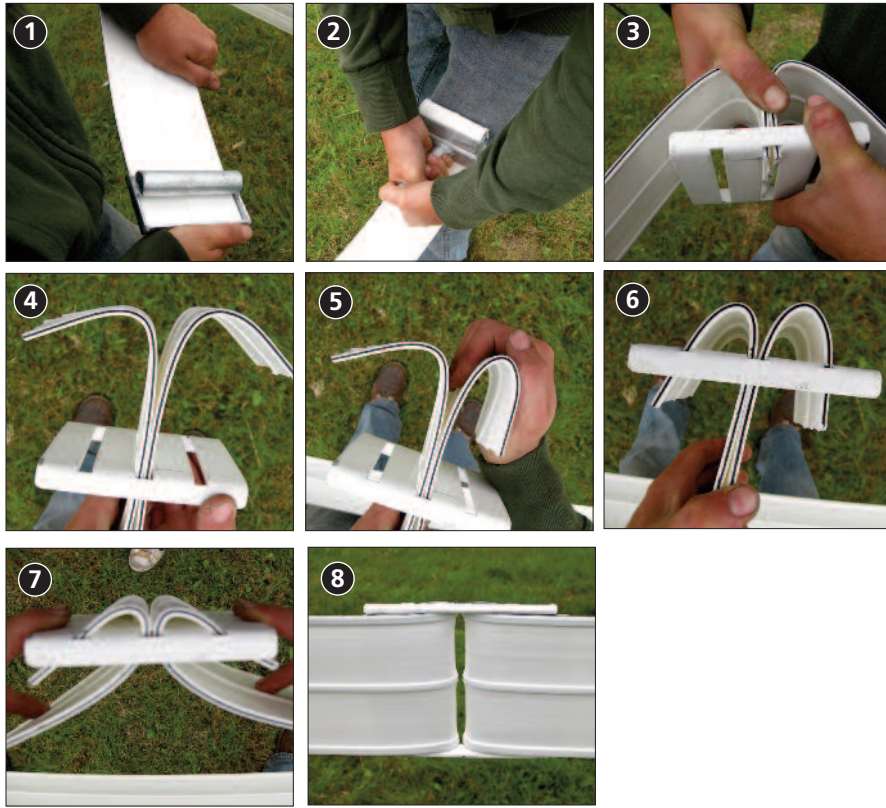


# JOINING BUCKLE

Used for Joining All Rail Products



- 1 Insert end of rail into the Bending Tool all the way so rail touches the back rim of the tool.
- 2 Bend the rail - the Bending Tool will create the optimum shape and length for inserting rail into the Joining Buckle.
- 3 With ribs of the Joining Buckle facing you, insert both ends of the pre-bent rail through the middle slot. (see Diagram **B**)  
**Note:** Make sure you have the Joining Buckle facing the proper direction! (see Diagram **E**)
- 4 Pull enough rail through the slot to allow you to further manipulate the rail ends.
- 5 Hand bend the ends to be close to parallel to the rail.
- 6 Insert each end into the appropriate outside slots. Pull/push both rails down through the slots as much as possible. (see Diagrams **C** and **D**)
- 7 With your thumbs resting on the outer edges of the Buckle - press down on the Buckle, while at the same time, putting pressure on the rail. Trying to make the assembly as "flat" as possible.
- 8 The joined assembly will flatten out during final tensioning. This view is from the rail side of the fence!

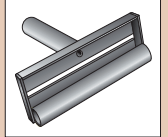
## Horserail® Products

### • Joining Buckle

- Colors: White, Black and Brown
- Sizes: 4", 5" and 6" (108mm, 133mm and 159mm)

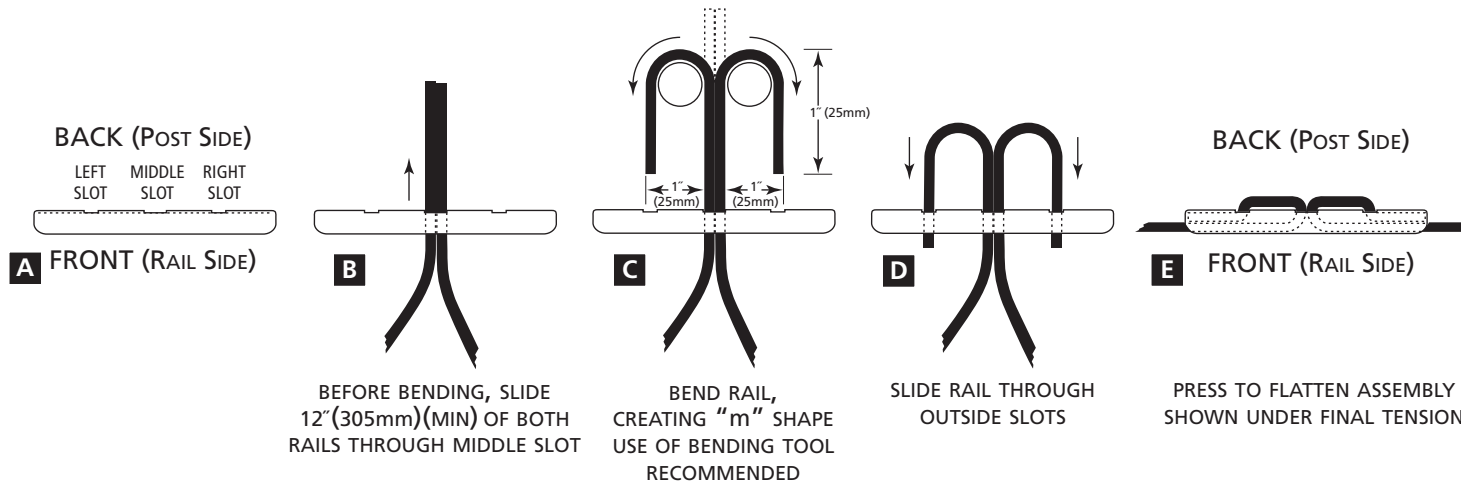
### • Bending Tool

- Match size of rail



## Other Related PDF Info Sheets

- How to Cut Rail



For More Details,  
Tips & Techniques  
on Building Fences,  
Please visit our website:  
[www.horserail.com](http://www.horserail.com)

