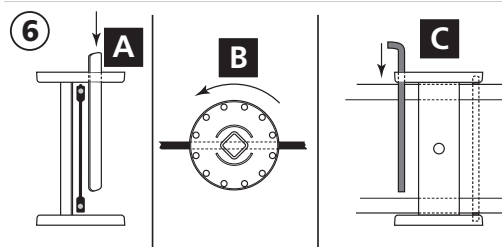
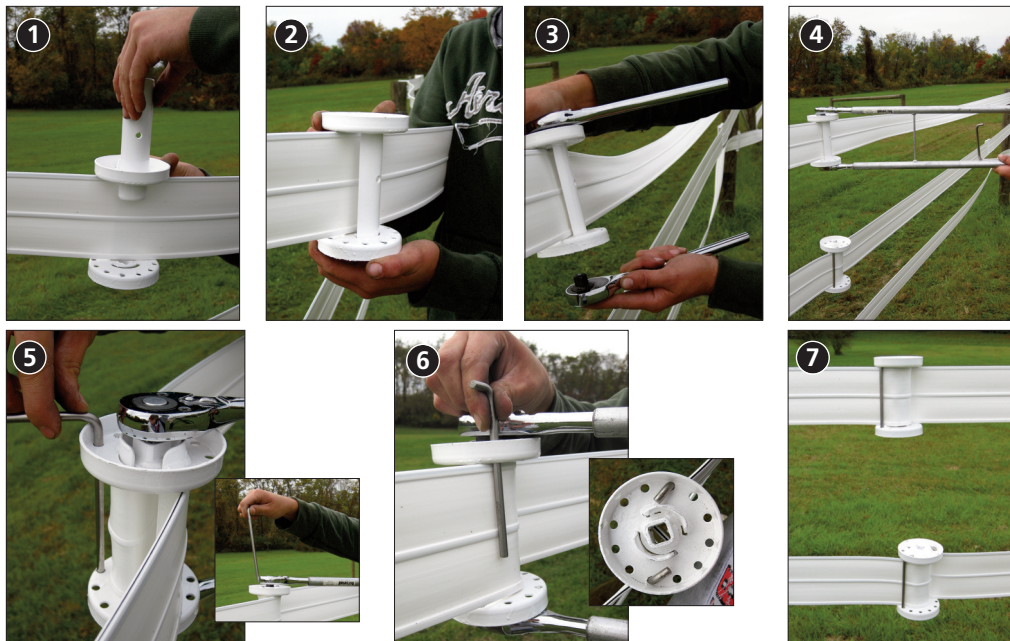


TENSIONING SPOOLER

Used for tensioning all rail products

Installing the Convenient Two Piece Spooler

- ❶ Place the Two-Piece Spooler on the rail by first holding the Spooler up to the rail and then sliding the removable section into the appropriate slot. Keep 12" (305mm) to 18" (457mm) from line post.
- ❷ Square the spooler (with a speed square) to the rail before tensioning.
 - Use one Spooler for every 660' (201m) of Rail and/or when 90° of elevation and directional change occur.
 - Corners, small dips and rises create friction so use one Spooler for every accumulated 90°.
 - Make sure rail is hand tight before final tensioning with spooler.
 - Must have sufficient slack in rail for one full rotation before becoming taut.
- ❸ To make installation and tightening easier and safer, use the Extended Handle Ratchets. Place a ratchet on each Spooler hub.
- ❹ Slide on extended handles and remove the safety pin from the rubber strap.
- ❺ Tension the rail by first ratcheting the Extended Handles (use the safety pin to hold the tension while ratcheting back) then remove safety pin, repeat ratcheting until taut.
- ❻ Two locking pins **MUST** be placed opposite each other in holes closest to the tensioned rail.
- ❼ For best presentation - install Spoolers to line up vertically.



Install Spooler and tension the fence

For aesthetics - place Spooler 12" (305mm) minimum from line post

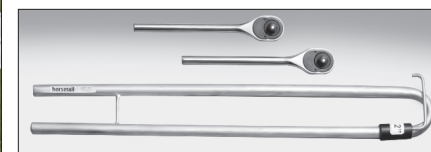
- A** Place Spooler on rail and slide "removable" hub piece into place
- B** Allow for one full rotation before becoming taut
- C** Place locking pins into pre-drilled holes, opposite each other, to stop the Spooler from unwinding

Horserail® Product

- **Tensioning Spooler**
 - Colors: White, Black and Brown
 - Sizes: 4", 5" and 6" (108mm, 133mm and 159mm)

Other Tools Needed

- Speed Square
- Extended Handle Ratchets
- Long Handle Ratchets



Extended Handle Ratchets



Long Handle Ratchets

*For More Details,
Tips & Techniques
on Building Fences,*

*Please visit our website:
www.horserail.com*


Just – buckle it up!

