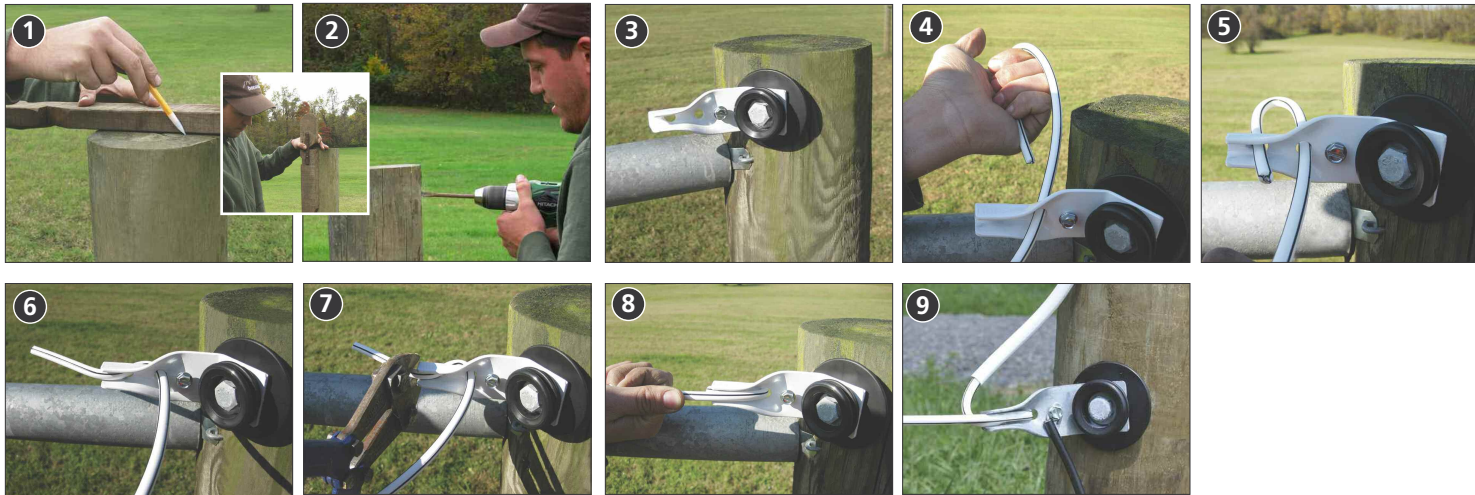


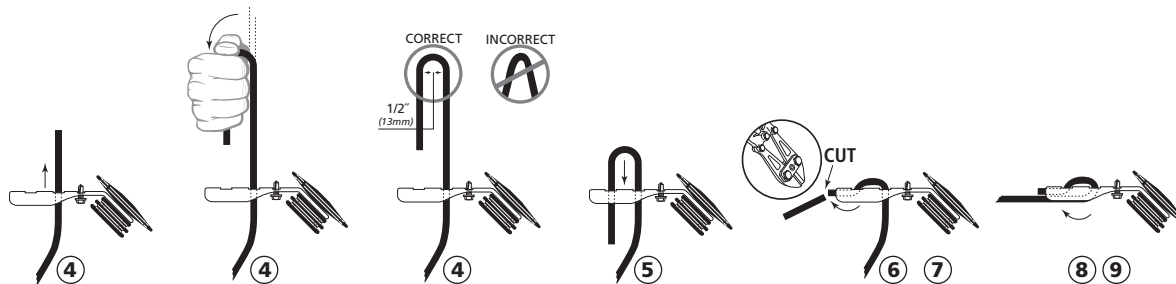
HOTCOTE® – END POST ATTACHMENT FOR COATED WIRE

Electrifiable Coated Wire



- ❶ Mark the posts for proper Buckle placement (for more details see the "How To Mark Posts" PDF)
- ❷ For ease of attachment, drill a 3/8" (9mm) pilot hole for a 1/2" (12mm) lag screw. Do not overtighten lag screw!
- ❸ Use the proper Buckle for your application:
 - Pre-Bent 45° Attaching Insulated Buckle: 45° provides correct mounting position (for end and gate posts)
 - Straight Attaching Insulated Buckle: (use on square posts, buildings or other flat surfaces)
- ❹ All Buckles are laced the same (Pre-Bent 45° Attaching Insulated Buckle shown). See diagrams below.
 - Insert coated wire into second hole (closer to center of buckle)
 - Using your hand - bend the end of the coated wire to as close to parallel to each other as possible. Looking for 1/2" (12mm) radius bend between wires.

- ❺ Insert the end into the remaining hole and push both wires back through the holes as far as possible.
- ❻ First bend the end of the coated wire up into the buckle
Options after bending:
 - Leave long for a jumper to next Insulated Buckle
 - Or trim short and neatly
- ❼ Use bolt cutters - if choice is to trim off any surplus
- ❽ The second bend takes the coated wire up toward buckle, tight against the first bend
- ❾ Final tension the fence - creating a nice, clean and safe installation. (for more details see the "Donut Tensioner for Coated Wire - Installation" PDF)



Horserail® Products

- Pre-Bent 45° Attaching Insulated Buckle
- Straight Attaching Insulated Buckle

Other Tools Needed

- Bolt Cutters
- Impact Wrench and Socket

Other Related PDF Info Sheets

- How to Mark Posts
- Donut Tensioner for Coated Wire - Installation

For More Details,
Tips & Techniques
on Building Fences,
Please visit our website:
www.horserail.com

