

BENDING TOOL FOR RAIL

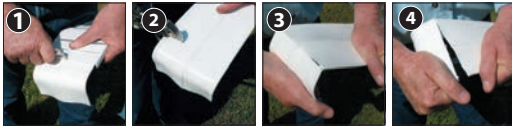
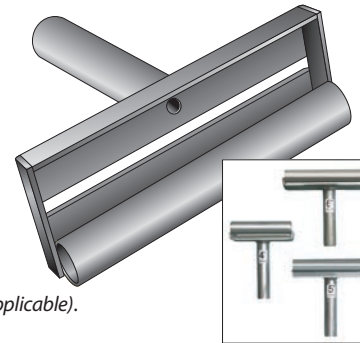
Installation Procedures for Horserail®, Hottop® and Hottop®Plus



Cutting the Rail

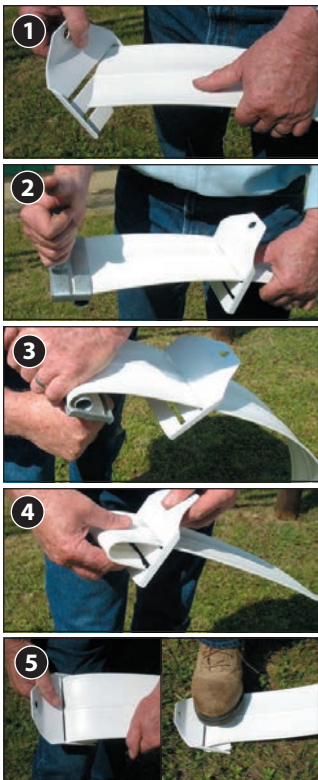
End up with a square, neat edge — easily, quickly & safely.

- Using a square as a guide cut rail with a handheld grinder.



OPTION: Score, cut, bend and tear rail:

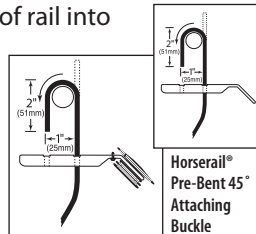
- Using a buckle as a square, score the rail with a sharp utility knife.
- Use bolt cutters to snip both outside wires on score line.
- Bend rail along score – flex back and forth to snap middle wire(s) (if applicable).
- Finish by tearing rail.



Bending to ATTACH Rail

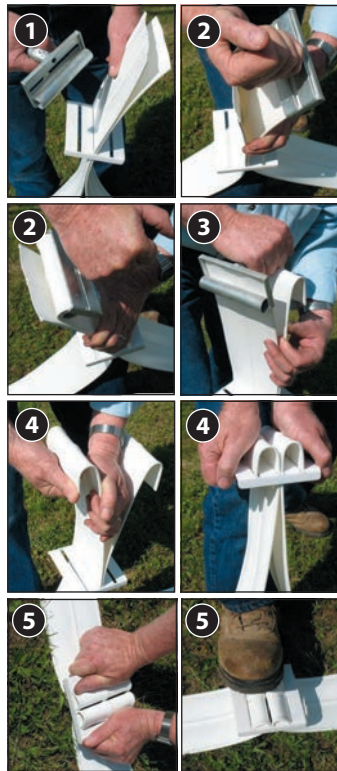
- Slide end buckle onto rail.
NOTE: Make sure buckle ribs face rail.*

- Insert end of rail into bending tool slot nearest cylinder.



Hottop® and Hottop® Plus Pre-Bent 45° Attaching Insulated Buckle

- Bend rail toward second slot on buckle using the bending tool.
- Finish shaping by hand for easy insertion into the buckle slot.**
- Flatten by first pulling down on the rail/buckle assembly then place it on a flat surface and apply pressure with your foot.



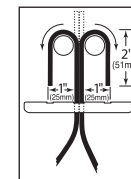
Bending to JOIN Rail

- Slide ends of two rail sections through the middle slot of joining buckle. **NOTE: Make sure buckle ribs face rail.***

- Insert end of one rail into bending tool slot nearest cylinder. Bend first rail away from second rail.

- Then insert other end of rail into bending tool and bend second rail in opposite direction creating an "m" shape.

- Finish shaping by hand for easy insertion into the buckle slots.**



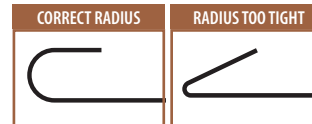
Horserail®, Hottop®, and Hottop® Plus Joining Buckle

- Insert both shaped rails into buckle and flatten by first pulling down on the rail/ buckle assembly then placing it on a flat surface and apply pressure with your foot.

*RIBS - Make sure they face rail.



**Accurately shaped rail



Horserail® Products

- Bending Tool Horserail®**
 - Sizes: 4.25", 5.25" and 6.25" (108mm, 133mm and 159mm)
- Hottop® & Hottop® Plus**
 - Sizes: 4.25" and 5.25" (108mm and 133mm)

Appropriate Horserail®, Hottop®, or Hottop® Plus Buckle

Other Tools Needed

- Handheld Grinder
- Square
- Utility Knife
- Bolt Cutters (optional)

Other Related PDF Sheets

- Horserail® End Post Attachment
- Hottop® End Post Attachment
- Joining Buckle

For More Details, Tips & Techniques on Building Fences, Please visit our website



horserail
Just...buckle it up!

horserail.com

