



- 1 Mark all posts. (see "How To Mark Posts" PDF)
- 2 Pre-drill all holes using a 5/16" (8mm) drill bit approx. 3" to 4" (76mm to 102mm) into the post.
- 3 Cut Rail. (see "How To Cut Rail" PDF)
- 4 Use a Bending Tool to properly size and shape the bend at the end of the rail.
- 5 Use your hand to further bend the end of the rail so that it is close to parallel with the rail.
- 6 Insert bent rail into slot closest to attaching hole.
Note: Make sure the "ribs" and pre-bent angle of the Buckle are facing away from you!
- 7 Pull enough rail through the slot to let you then slide the rail end through the remaining slot in the Buckle. Then pull/push both rails down through the slots as much as possible - trying to flatten the rail/buckle assembly.
- 8 Fasten End Buckle assembly with lag screw using an impact wrench.
Note: Only tighten halfway (see diagrams on page 2) for details.



TIP: To find the proper length when attaching a rail to an end post:

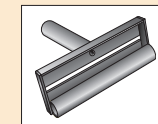
- First place a Buckle on top of the rail.
- Pull the rail (*hand tight*).
- Hold the two items up to the post marking where the desired length would be.
- Mark the rail and follow the steps on how to cut it.

Hottop® & Hottop® Plus Products

- Sizes: 4.25" and 5.25" (108mm and 133mm)
- Pre-Bent 45° Attaching Buckle or Straight Attaching Buckle*
- Colors: Brown, Black & White



- Bending Tool
- Match rail size



Other Tools Needed

- Handheld Grinder
- Square
- Utility Knife
- Bolt Cutters
- Impact Wrench
- Drill
- 5/16" (8mm) Drill Bit
- Lag Screws:
- 1/2" x 4" thru 6"
(13mm x 102mm thru 152mm)

Other Related PDF Sheets

- How to Mark Posts
- How to Cut Rail

* See (Diagram 2 - Inset B) on Page 2

For More Details,
Tips & Techniques on
Building Fences,
Please visit our website.



Diagram 1

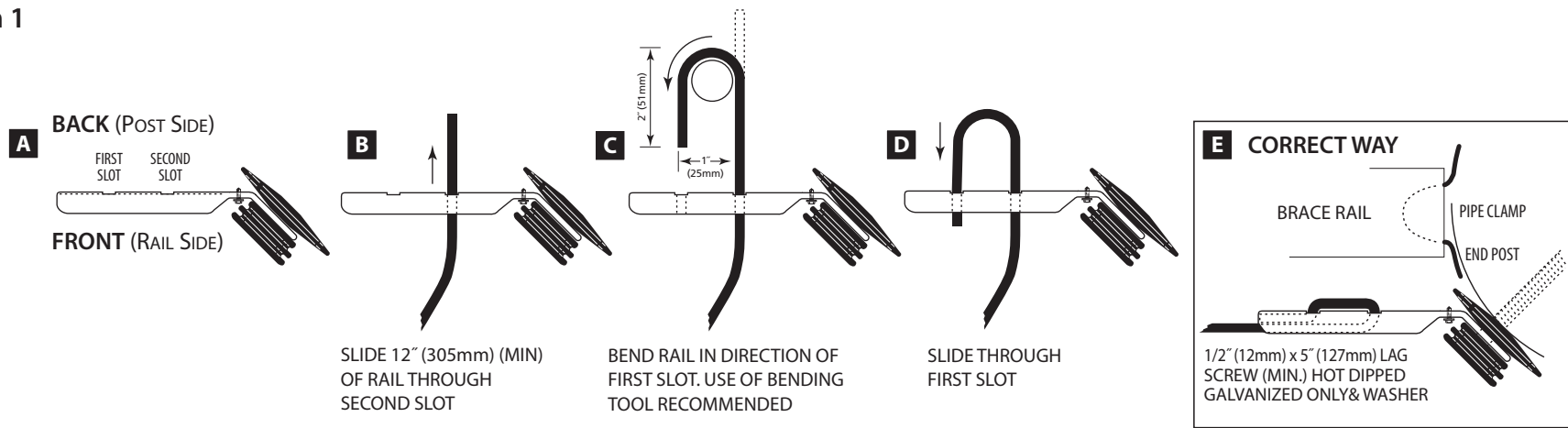
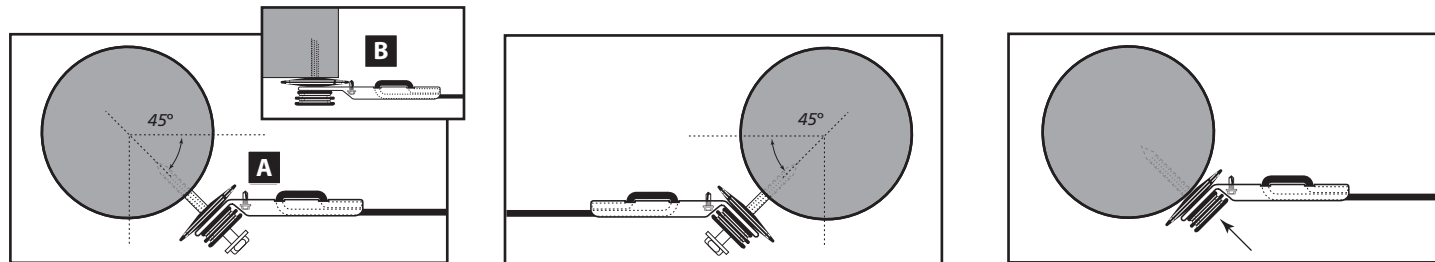


Diagram 2



Install rail onto selected end buckle and attach to end post

A Pre-Bent 45° Attaching Insulated Buckle – attach at a 45 degree angle leaving the lag screw partially out

B **OPTION:** Straight Attaching Buckle - for use on a flat surface such as a building
Note: tighten the lag screw

C **IMPORTANT:** Do Not Overtighten!

Install other end of rail using the proper end buckle

- Tighten lag screw halfway
- Leave sufficient length in rail to allow proper tensioning

Complete your fence installation by fully tightening both end post lag screws - this will also further tension the rail!

• **IMPORTANT:** Do Not Overtighten!