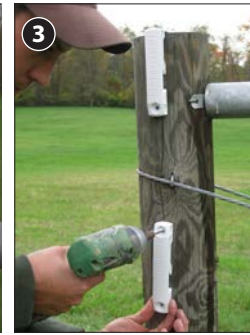
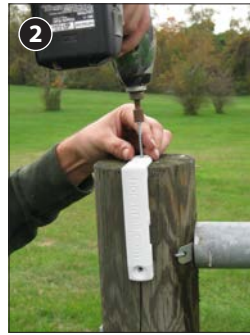


HOTTOP® & HOTTOP® PLUS – LINE POST INSULATED BRACKET ATTACHMENT

1 Mark all posts. (see "How To Mark Posts" PDF)

- For the best looking fence, the rails should be placed equal distance apart.
- Find the center tangent of each post - this will reduce binding.
- Use a tape measure or a marking board to locate and mark the top of each bracket - from the top down.



2 Attach Top Rail Insulator Bracket (see Diagram A)

- Top holes only
- Use wide shoulder, hex head drive screws for each bracket



3 Attach Line Post Insulator Bracket (see Diagram A)

- Top holes only
- Use wide shoulder, hex head drive screws for each bracket
- Bracket must be at right angle to rail - allowing for movement (see Diagram D)

4 Payout rail and insert into brackets

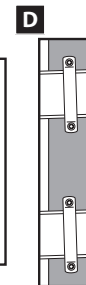
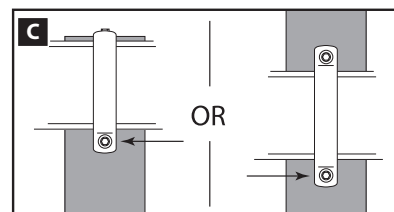
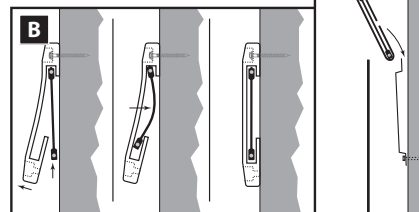
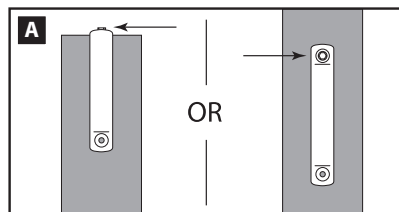
- To best protect the rail - Use either a "Payout Box" or an oversized spinning jenny

5 Lift and slide rail in place (see Diagram B) from bottom of insulator up into the top slot.

6 Cup rail so it snaps into the bottom slot of insulator bracket.

7 Finish attaching all insulator brackets to line posts

- Bottom hole for Insulator Brackets and Top Metal Insulated Bracket
- Top hole for Line Post Metal Insulated Brackets (see Diagrams C and D)



CAUTION: Place bracket on tangent of post and rail. If the bracket is off center it will pinch or bind the rail when tensioning.

OPTION
Line Post Metal Insulated Brackets
Use bottom hole to attach bracket, slide rail and insulator from the top.

Hottop® & Hottop® Plus Products

- Sizes: 4.25" and 5.25" (108mm and 133mm)
- Top Rail Insulator Bracket and Line Post Insulator Bracket
- Colors: Brown, Black & White



Other Tools Needed

- Payout Box or Oversized Spinning Jenny
- Impact Wrench
- Wide Shoulder, Hex Head Drive Screws

Other Related PDF Sheets

- How to Mark Posts
- Rail Payout Box

For More Details, Tips & Techniques on Building Fences, Please visit our website:



horserrail.com

