



- 1 Mark all posts. (see "How To Mark Posts" PDF)
- 2 Pre-drill all holes using a 5/16" (8mm) drill bit approx. 3" to 4" (76mm to 108mm) into the post.
- 3 Cut rail - using a square as a guide - and a handheld grinder. (see "How To Cut Rail" PDF)
- 4 Insert rail into slot closest to attaching hole. Make sure the "ribs" and pre-bent angle of the Buckle are facing away from you! Use a Bending Tool to properly size and shape the rail end.
- 5 Use your hand to further bend the end of the rail so that it is close to parallel with the rail.
- 6 Slide the rail end through the remaining slot in the Buckle. Then pull/push both rails down through the slots as much as possible - trying to flatten the rail/buckle assembly.
- 7 Fasten End Buckle assembly with lag screw using an impact wrench.  
**Note:** Only tighten halfway. (see diagrams on Page 2)



**TIP: To find the proper length when attaching a rail to an end post:**

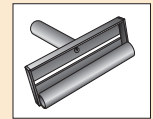
- First place a Buckle on top of the rail.
- Pull the rail (hand tight).
- Hold the two items up to the post marking where the desired length would be.
- Mark the rail and follow the steps on how to cut it.

**Horserail® Product**

- Pre-Bent 45° Attaching Buckle
  - Straight Attaching Buckle
    - Colors: Brown, Black & White
- 
- Sizes: 4.25", 5.25" and 6.25"  
(108mm, 133mm and 159mm)

• Bending Tool

- Match size of rail



**Other Tools Needed**

- Handheld Grinder
- Square
- Utility Knife
- Bolt Cutters
- Impact Wrench
- Drill
- 5/16" (8mm) Drill Bit
- Lag Screws: 1/2" x 4" thru 6"  
(12mm x 108mm thru 159mm)

**Other Related PDF Sheets**

- How to Mark Posts
- How to Cut Rail

For More Details,  
 Tips & Techniques on  
 Building Fences,  
 Please visit our website.



[horserrail.com](http://horserrail.com)

Diagram 1

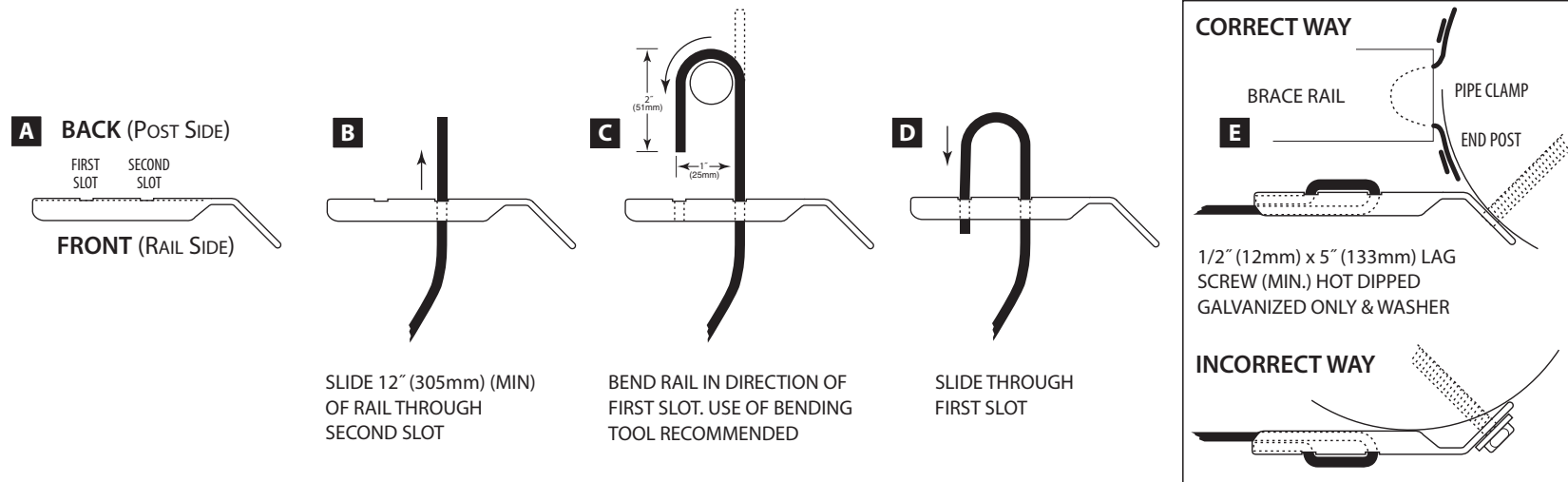
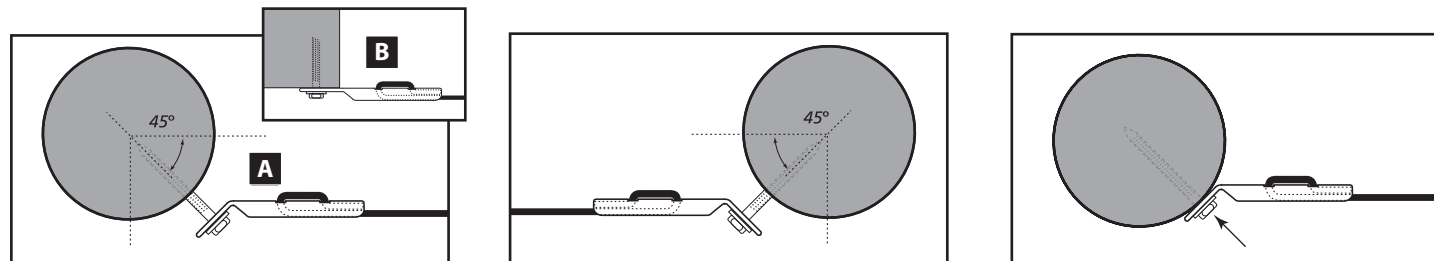


Diagram 2



Install rail onto selected end buckle and attach to end post

- A** Pre-Bent 45° Attaching Buckle attach at a 45 degree angle leaving the lag screw partially out
- B** OPTION: Straight Attaching Buckle - for use on a flat surface such as a building - Note: tighten the lag screw
- C** IMPORTANT: Do Not Overtighten!

Install other end of rail using the proper end buckle

- Tighten lag screw halfway
- Leave sufficient length in rail to allow proper tensioning

Complete your fence installation by fully tightening both end post lag screws - this will also further tension the rail!

• **IMPORTANT: Do Not Overtighten!**