

HORSERAIL® – LINE POST BRACKET ATTACHMENT

1 Mark all posts. (see "How To Mark Posts" PDF)

- For the best looking fence the rails should be placed equal distance apart.
- Find the center tangent of each post - this will reduce binding.
- Use a tape measure or a marking board to locate and mark the top of each bracket - *from the top down*.



2 Attach Single Hole Top Line Post Brackets (see Diagram A)

- Bottom holes only.
- Use wide shoulder, hex head drive screws for each bracket.

3 Attach Single Hole Line Post Brackets (see Diagram A)

- Bottom holes only.
- Use wide shoulder, hex head drive screws for each bracket.

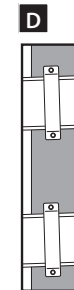
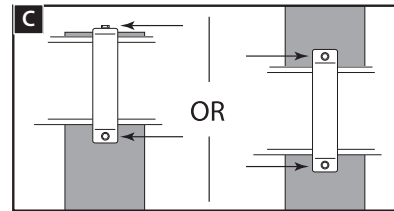
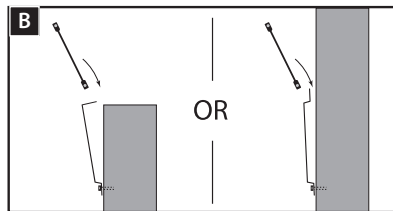
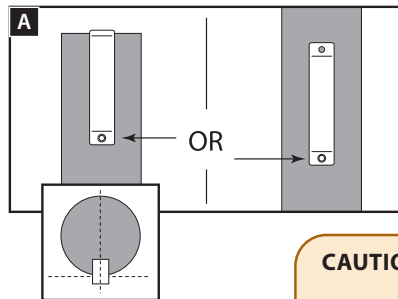


4 Bracket must be at right angle to rail - allowing for movement. (see Diagram D)

5 Payout rail and insert into brackets.

- To best protect the rail - Use either a "Payout Box" or an oversized spinning jenny.
- Lift and slide rail in place. (see Diagram B)


6 Finish attaching all brackets to line and end posts. (see Diagram C)



CAUTION: Place bracket on tangent of post and rail. If the bracket is off center it will pinch or bind the rail when tensioning.

Horserail® Products

- Single Hole Top Line Post Bracket
- Single Hole Line Post Bracket
 - Colors: Brown, Black & White



- Sizes: 4.25", 5.25" and 6.25" (108mm, 133mm and 159mm)

Other Tools Needed

- Payout Box or Oversized Spinning Jenny
- Impact Wrench
- Wide shoulder, hex head drive screws

Other Related PDF Sheets

- How to Mark Posts
- How to Cut Rail

For More Details, Tips & Technique on Building Fences, Please visit our website.



horserail.com