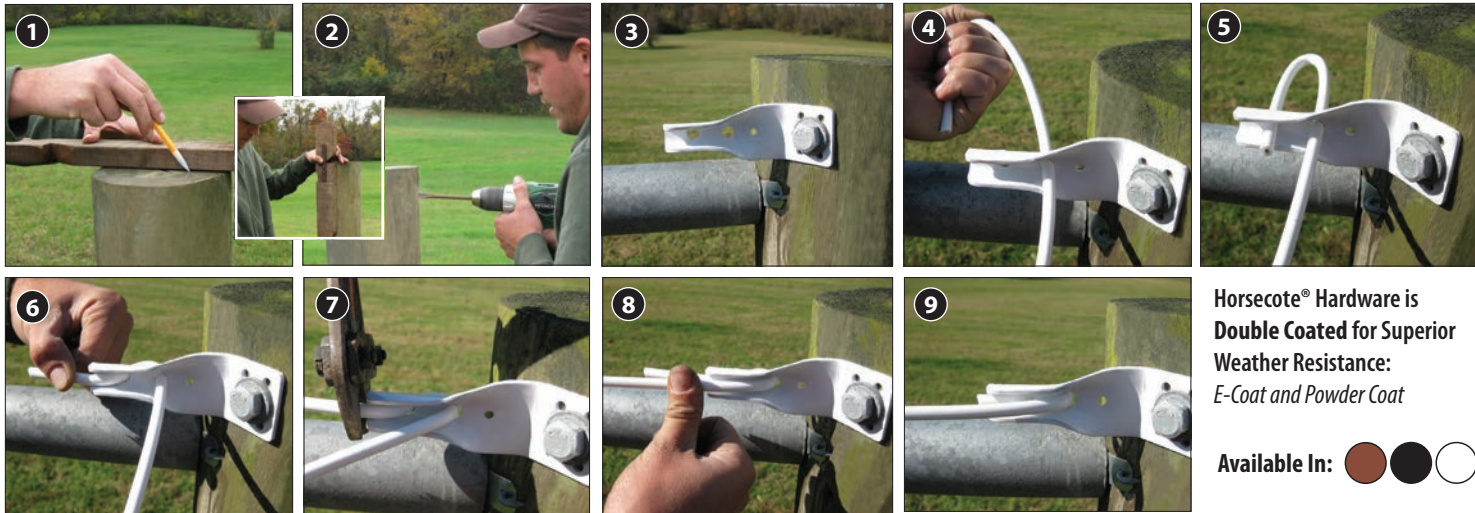


HORSECOTE® – END POST ATTACHMENT FOR COATED WIRE

Non-Conductive Coated Wire



Horsecote® Hardware is
Double Coated for Superior
Weather Resistance:
E-Coat and Powder Coat

Available In:   

Horsecote® Products

- Pre-Bent 45° Attaching Buckle
- Straight Attaching Buckle

Other Tools Needed

- Bolt Cutters
- Impact Wrench and Socket
- Hammer
- Drill
- Hex Head Screw Gun
- 3/8" Ship Auger

Other Related PDF Sheets

- How to Mark Posts
- Mini Spooler for Coated Wire – Installation

- **WARNING: Only for use with low-impedance electric fence energizers!**
- Always use an adequate number of electric fence warning signs and make sure to attach them securely.
- It's essential to keep fence line clear of all debris. Please do not burn!

1 Mark the posts for proper buckle placement (for more details see the [How To Mark Posts PDF](#)).

2 For ease of attachment, drill a 3/8" (9mm) pilot hole for a 1/2" (12mm) lag screw. Do not overtighten lag screw!

3 Use the proper buckle for your application:

- **Pre-Bent 45° Attaching Buckle:** 45° provides correct mounting position (for end and gate posts)

- **Straight Attaching Buckle:**

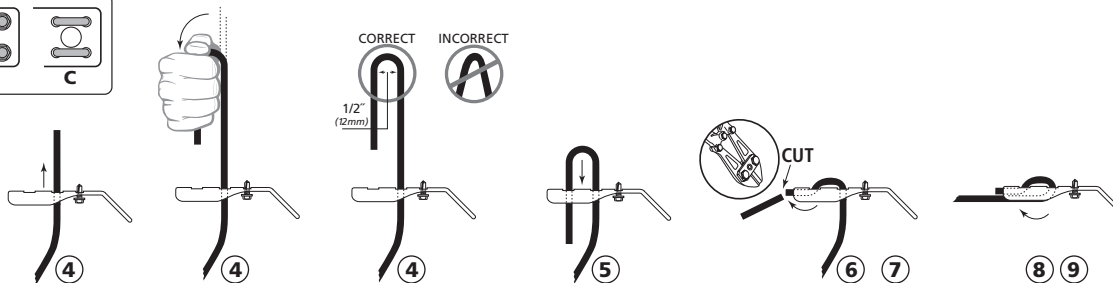
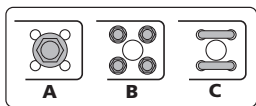
(use on square posts, buildings or other flat surfaces)

- Attaching options for non-insulated buckles:

A) Lag Screw and Washer (shown in photo)

B) Four - Wide Shoulder Hex Head Drive Screws

C) Two - 2" (50mm) barbed staples



4 All Buckles are laced the same (Pre-Bent 45° Attaching Buckle shown). (See diagrams below)

- Insert coated wire into second hole (closer to center of Buckle)

- Using your hand - bend the end of the coated wire to as close to parallel to each other as possible. Looking for 1/2" (12mm) radius bend between wires.

5 Insert the end into the remaining hole and push both wires back through the holes as far as possible.

6 First bend the end of the coated wire up into the buckle.

7 Use bolt cutters to trim off any surplus.

8 The second bend takes the coated wire up toward buckle, tight against the first bend.

9 Final tension the fence – creating a nice, clean and safe installation. (for more details see the [Mini Spooler for Coated Wire - Installation PDF](#)).

Copyright © 2021 John Wall, Inc. All Rights Reserved.

Horserrail®, Hottop®, Hottop Plus®, Horsecote®, Hotcote®, and Safe-T-Brace Cable® are registered U.S. trademarks of John Wall, Inc. Please visit horserrail.com for a complete list of trademark and patent information.



horserrail.com

SAFETY FIRST: USE SAFETY EYE GLASSES AND GLOVES.