

# HOTCOTE® – END POST ATTACHMENT FOR COATED WIRE

## Electrifiable Coated Wire



Hotcote® Hardware is Double Coated for Superior Weather Resistance:  
E-Coat and Powder Coat

Available In:

### Hotcote® Products

- Pre-Bent 45° Attaching Insulated Buckle
- Straight Attaching Insulated Buckle

### Other Tools Needed

- Bolt Cutters
- Impact Wrench and Socket
- Drill
- 3/8" Ship Auger

### Other Related PDF Sheets

- How to Mark Posts
- Mini Spooler for Coated Wire – Installation

**1** Mark the posts for proper buckle placement  
(for more details see the [How To Mark Posts PDF](#)).

**2** For ease of attachment, drill a 3/8" (9mm) pilot hole for a 1/2" (12mm) lag screw. Do not overtighten lag screw!

**3** Use the proper buckle for your application:

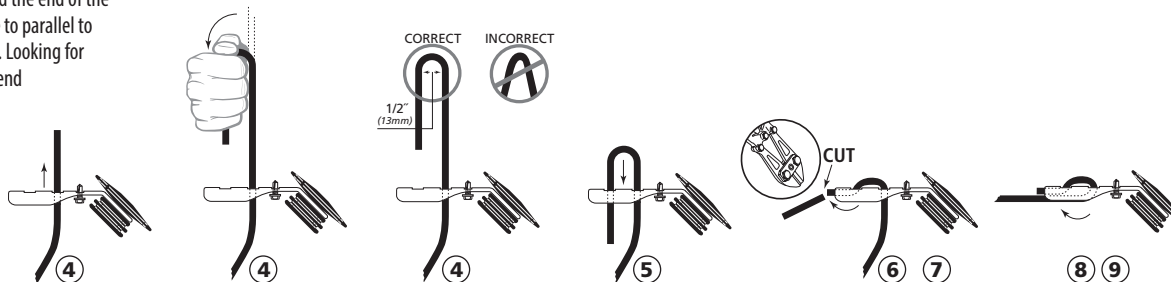
- **Pre-Bent 45° Attaching Insulated Buckle:** 45° provides correct mounting position (for end and gate posts)

- **Straight Attaching Insulated Buckle:**  
(use on square posts, buildings or other flat surfaces)

**4** All Buckles are laced the same (Pre-Bent 45° Attaching Insulated Buckle shown). See diagram below

- Insert coated wire into second hole (closer to center of buckle)

- Using your hand - bend the end of the coated wire to as close to parallel to each other as possible. Looking for 1/2" (12mm) radius bend between wires.



**5** Insert the end into the remaining hole and push both wires back through the holes as far as possible.

**6** First bend the end of the coated wire up into the buckle.

OPTIONS AFTER BENDING:

- Leave long for a jumper to next Insulated Buckle
- Or trim short and neatly

**7** Use bolt cutters – if choice is to trim off any surplus.

**8** The second bend takes the coated wire up toward buckle, tight against the first bend.

**9** Final tension the fence – creating a nice, clean and safe installation.  
(for more details see the [Mini Spooler for Coated Wire - Installation PDF](#)).

**• WARNING: Only for use with low-impedance electric fence energizers!**

**• Always use an adequate number of electric fence warning signs and make sure to attach them securely.**

**• It's essential to keep fence line clear of all debris. Please do not burn!**



horserail.com