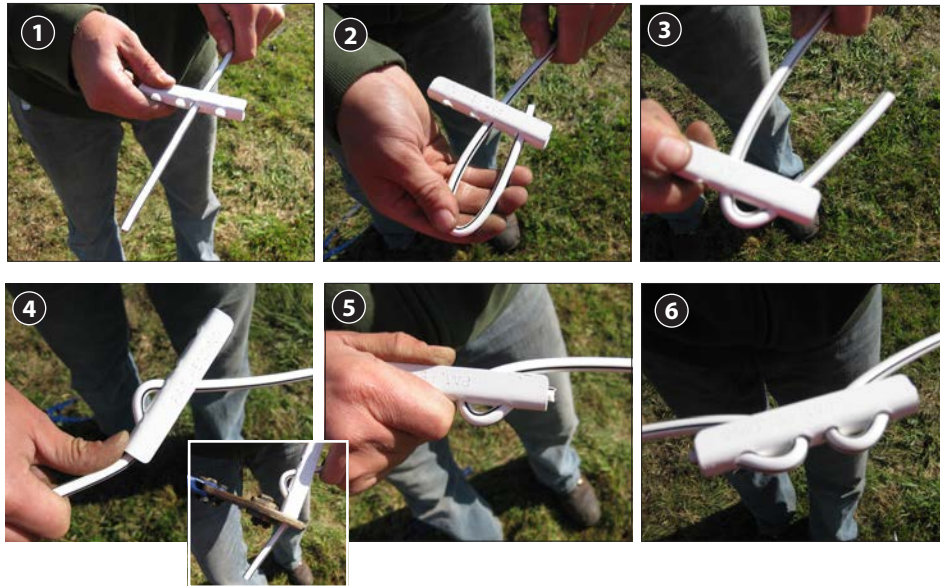


JOINING BUCKLE FOR COATED WIRE

Procedures are the same for Horsecote® and Hotcote®



Joining Buckle Installation Instructions

- Use the Joining Buckle to connect two coated wires together without the need to strip, crimp or tie a knot with this reusable joiner!
- Follow the 6 easy steps to install both electrifiable or non-conductive coated wire.

Note: You can assemble one wire at a time - see photos to the left - or you can do both wires at the same time as shown in the illustrations below.

Horsecote® & Hotcote® Product

• Joining Buckle

- Colors: Brown, Black & White



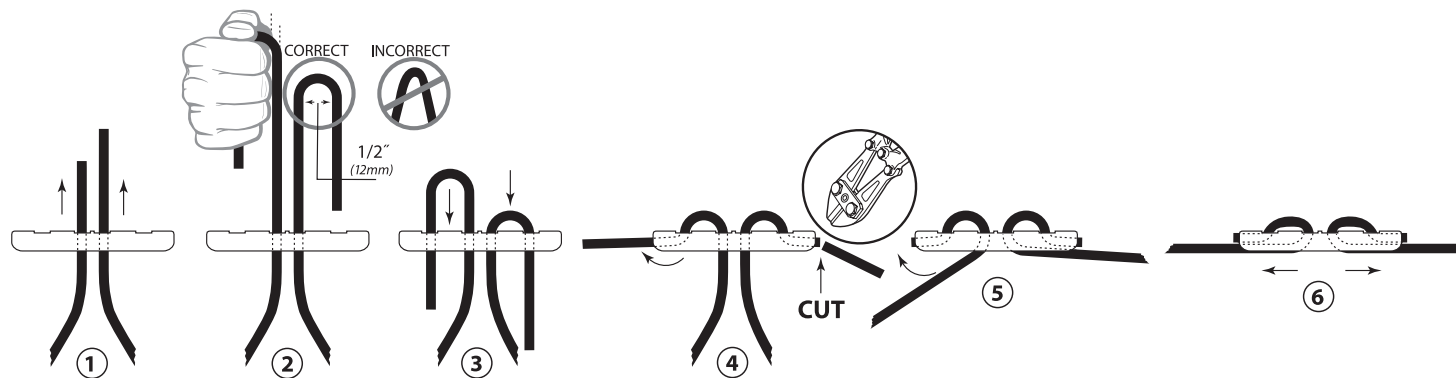
Other Tools Needed

• Bolt Cutters

Other Related PDF Sheets

- Mini Spooler for Coated Wire – Installation

- 1 Lace coated wire up through center holes.
- 2 Bend over each end of the coated wire so it is parallel to itself. Looking for 1/2" (13mm) radius bend between wires.
- 3 Push down through outer holes as much as possible.
- 4 Bend both ends, then trim with small bolt cutters to cut off any surplus.
- 5 Bend both coated wires up toward buckle.
- 6 Final tension the fence – creating a nice, clean and safe join.



Horsecote® and Hotcote® Hardware is Double Coated for Superior Weather Resistance: E-Coat and Powder Coat

Copyright © 2021 John Wall, Inc. All Rights Reserved.
Horserrail®, Hottop®, Hottop Plus®, Horsecote®, Hotcote®, and Safe-T-Brace Cable® are registered U.S. trademarks of John Wall, Inc. Please visit horserrail.com for a complete list of trademark and patent information.

- **WARNING: Only for use with low-impedance electric fence energizers!**
- Always use an adequate number of electric fence warning signs and make sure to attach them securely.
- It's essential to keep fence line clear of all debris. Please do not burn!




horserrail
Just...buckle it up!

horserrail.com

SAFETY FIRST: USE SAFETY EYE GLASSES AND GLOVES.